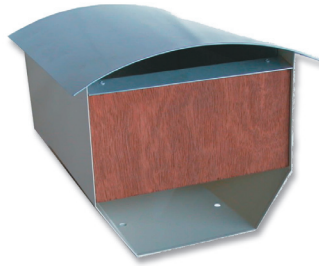


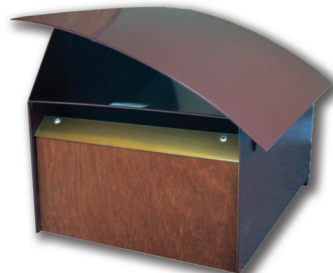
**Aspiring - Corrugated Iron Facia**

240mm H x 295mm W x 405mm D



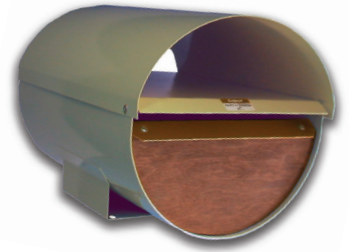
**Aspiring - Stained Timber Facia**

240mm H x 295mm W x 405mm D



**Tasman**

260mm H x 285mm W x 405mm D



**Cardrona**

265mm H x 275mm W x 390mm D



left



Right

**Sefton**

485mm H x 190mm W x 430mm D



**Belmont**

For Pillar and Wall mounting  
255mm H x 245mm W



**Eden**

400mm H x 375mm W x 355mm D



**Security Box  
Front Opening**

Mount on a wall or fence  
560mm H x 440mm W x 290mm D



**Security box  
Rear Opening**

Mount on a post or through a wall  
560mm H x 440mm W x 290mm D



**Slimline**

450mm H x 395mm W x 120mm D

## Eurobox Plastic Letterbox



**Milan**

460mm H x 380mm W x 200mm D

- FEATURES:**
- Free reflective numbers.
  - Full width slot to accept A4 envelope.
  - Modern styling.
  - Access from front.
  - Key entry only for extra security.
  - Mail flap for extra weather protection.
  - Wall mounting kit included.
  - Newspaper holder.

Colour options: Grey, Green or Black.



### Aspiring – Corrugated Iron Facia

- FEATURES:**
- Full width slot to accept A4 envelope.
  - Contemporary styling.
  - Can be padlocked for security.
  - Access from rear.
  - Large newspaper slot.
  - Powdercoated galvanised steel for rust protection.
  - Fits Metware stand.

Colour options: Roof and facia in metallic silver. Body in colour of your choice from standard range. (Looks best in darker colour)

### Aspiring – Stained Timber Facia

- FEATURES:**
- Full width slot to accept A4 envelope.
  - Contemporary styling.
  - Can be padlocked for security.
  - Access from rear.
  - Large newspaper slot.
  - Powdercoated galvanised steel for rust protection.
  - Fits Metware stand.

Colour options: Roof in metallic silver. Body in colour of your choice from standard range. Feature timber panel is dark stained Moranti giving dark red colour.

### Tasman

- FEATURES:**
- Full width slot to accept A4 envelope.
  - Contemporary styling.
  - Can be padlocked for security.
  - Access from rear.
  - Large newspaper slot.
  - Powdercoated galvanised steel for rust protection.
  - Fits Metware stand.

Colour options: Body and roof in colour of your choice from complete range. (Our recommendation: New denim Blue, Karaka or Desert Sand.) Feature timber panel is light stained Pine.

### Cardrona

- FEATURES:**
- Full width slot to accept A4 envelope.
  - Contemporary styling.
  - Can be padlocked for security.
  - Access via flip top lid.
  - Large newspaper slot.
  - Powdercoated galvanised steel for rust protection.
  - Fits Metware stand.

Colour options: Body and roof in colour of your choice from complete range. (Our recommendation: Earth Brown and Karaka) Feature timber panel is light stained Moranti giving a light reddish colour.

### Sefton

- FEATURES:**
- Full width slot to accept A4 envelope.
  - Narrow profile ideal for ROW and wall mounting in restricted areas.
  - Contemporary styling.
  - Can be padlocked for security.
  - Access from rear.
  - Large newspaper slot.
  - Powdercoated galvanised steel for rust protection.

Colour options: Body and roof in colour of your choice from complete range. Feature timber panel is light stained Pine.

### Belmont

- FEATURES:**
- Includes paper holder.
  - Wide slot for A4 mail.
  - Access from rear.
  - Can be padlocked for security.
  - Concertina depth to fit any pillar.
  - 3 bricks high, 1 brick wide for easy installation.
  - Powdercoated galvanised steel for rust protection.
  - Front timber insert for modern look.

Colour options: Your choice from our complete range.

### Security Box

- FEATURES:**
- Large capacity to hold several days mail.
  - Deep letter area so mail doesn't hang out the front.
  - Manufactured from galvanised steel with a powdercoated finish.
  - Key lock.
  - Wide slot for A4 and larger mail.
  - Contemporary design featuring timber contrast panels.
  - Large newspaper holder.

### Slimline

- FEATURES:**
- Full width slot to accept A4 envelope.
  - Contemporary styling.
  - Can be padlocked for security.
  - Mail flap for extra weather protection.
  - Powdercoated galvanised steel for rust protection.
  - Access from front top.
  - Newspaper holder.
  - Slim style makes it ideal for narrow driveways.

Colour options: Your choice from our complete range.